



9th Badlands Jeep Jamboree May 31 – June 2, 2018



Adventure Consultant: Ty Deveraux

Phone: 530.333.1462

Email: ty@jeepjam.com

9th Badlands Jeep Jamboree

Attica, Indiana
May 31 – June 2, 2018
Trail Rating 3 – 9

Policies & Reminders for 2018

- **2018 EVENT WAIVER:** It is a requirement that you complete a Release of Liability Waiver for all occupants of your Jeep 4x4 and **BRING IT WITH YOU TO ON-SITE REGISTRATION (THURSDAY)**. A printed, signed and dated Release of Liability Waiver is required for each participant attending a Jeep Jamboree USA event. All passengers in your Jeep 4x4 must sign a Release of Liability Waiver. A parent or the minor's legal guardian must sign and date a waiver for participants under the age of 18 years old. If you forget your signed Release of Liability Waiver, all occupants of your vehicle must be present at registration to sign a new waiver before you can receive your event credentials.
- **NO ON-SITE REGISTRATIONS WILL BE ACCEPTED:** All new registrations of vehicles, adding, deleting or changing passengers must be completed (2) two weeks prior to the Jamboree date. Please refer to the refund and transfer policy on your registration form, event itinerary or the official Jeep Jamboree website.
- Participant Jeep tire size is not to exceed 37." If you exceed the tire limitations you will be turned away at registration and will not be allowed to attend the Jamboree or receive a refund.
- A working CB radio with adequate antenna is mandatory for all Jeep Jamboree events. Handheld CB's are not recommended.
- In order to sign up for off-road trails, your Vehicle Evaluation form must be stamped by the JJUSA Event Staff when you receive your registration packet.
- Each participant must wear his/her wristband and nametag throughout the entire Jamboree.
- Trail stickers provided at trail sign-ups must be displayed on your windshield prior to departing for any off-road trail ride.

ADDITIONAL NOTES

- JJUSA Event t-shirts are not trip specific and are the same for the entire season. Event t-shirts are included in your registration fee and must be preordered at the time of your registration. Please list desired sizes during your online registration or while registering over the phone.
- While the Trail Guides do their best to trim back as much brush as possible, they are limited by federal, state, tribal and private landowners as to how much trail maintenance can be performed.

9th Badlands Jeep Jamboree

This Jamboree is a Select Jamboree. – Catered meals include dinner on Friday and Saturday. Arrangements for breakfast, lunch and a full tank of gas should be taken care of prior to the General Attendance Meeting on Friday and Saturday.

THURSDAY, May 31, 2018

2:00 P.M.

The following clinics will be offered beginning at 2:00 P.M.

Basic Offroad Tips & Tricks, Winching & Recovery, CB Test & Tune, Manifold Cooking, Games For All Ages

5:00 P.M. - 7:00 P.M.

Registration, vehicle evaluation and trail sign-ups will take place at the Badlands Off Road Park (BORP), 3968 N. Xavier Rd., Attica, IN, 47918, 765-762-2981. Please refer to "How Do I Get There?" for driving directions. Trail sign-ups will take place during registration and are on a first come, first serve basis. Vehicle evaluation is MANDATORY PRIOR TO trail sign-ups. NO LATE REGISTRATION on Friday morning. Make sure you have a full tank of gas and a sack lunch prior to the General Attendance Meeting.

FRIDAY, June 1, 2018

8:30 A.M. - 9:00 A.M.

Mandatory General Attendance Meeting and staging at the Badlands Off Road Park

9:00 A.M. - 12:00 P.M.

Trail ride

12:00 P.M. - 1:00 P.M.

Lunch along the trail

1:00 P.M. - 5:00 P.M.

Trail ride

6:00 P.M. - 7:00 P.M.

Dinner at the Attica Indiana Firehouse
200 South McDonald Street, Attica, IN 47918

Please do not park on McDonald Street. Side street parking, and the adjacent Church parking lot are available for parking. McDonald Street is narrow and in case of an emergency dispatch call, street parking will restrict exit of the fire trucks.

Refer to "How Do I Get There?" for driving directions. Be sure to pack a lunch for your Saturday trail ride.

SATURDAY, June 2, 2018

6:00 A.M. - 8:00 A.M.

Pancake Breakfast – Served at the Attica Firehouse - Donations encouraged

8:30 A.M. - 9:00 A.M.

Mandatory General Attendance meeting at the Badlands Off Road Park

9:00 A.M. - 12:00 P.M.

Trail ride

12:00 P.M. - 1:00 P.M.

Lunch along the trail

1:00 P.M. - 5:00 P.M.

Trail ride

Jeep Wash provided by the Attica Volunteer Fire Department.

Donations encouraged and appreciated

6:00 P.M. - 7:00 P.M.

Dinner at the Attica Firehouse

Sponsor prize drawing and Coordinator Choice Awards will take place after dinner.

For trip questions contact Ty Deveraux: ty@jeepjam.com 530-333-1462
For vehicle questions contact Ty Deveraux: ty@jeepjam.com / 530-333-1462

For registration questions, adding, deleting or changing passengers contact:
Savannah Brewer: savannah@jeepjam.com / 530-333-2550

LOCAL AREA INFORMATION

WEATHER

The weather this time of year varies. For a 10 day forecast of weather conditions go to www.weather.com

WEBSITE

www.badlandsoffroad.com

ACCOMMODATIONS

CRAWFORDSVILLE, 35 miles from Park

Candlewood Suites 765-362-8135
2600 Industrial Blvd. Crawfordsville, IN 47933

LAFAYETTE, 35 miles from Park

Red Roof Inn 765-448-4671
Signature Inn 765-447-4142

CAMPING/RV PARKING

Attica Family Campground 765-762-6189
Adjacent to Badlands Off Road Park
Summers Campground 765-762-2832
8 miles from Badlands Off Road Park

For other local options go to www.badlandsoffroad.com

For lodging, most of our participants will need to make reservations in Crawfordsville or Lafayette. Both are approximately 35 miles from the Park. Both Lafayette and Crawfordsville have several places for breakfast and lunch. Hotel Attica is the closest hotel to the Park.

HOW DO I GET THERE?

From Chicago, Illinois:

US 41 South to Attica. At first stop light turn right onto Perry Street. Follow Perry Street to the 4-way stop sign at the flashing light. Go through the stop sign. Entrance is on the right side of the road approximately ½ mile.

From Danville, Illinois:

Interstate 74 East to Exit 15. North on US 41 to Attica. Upon entering Attica city limits, turn left onto Sycamore Street (Church on left, Golf Course on right). Follow Sycamore Street to the 4-way stop sign at the flashing light. Turn left at the 4-way stop sign. Entrance is on the right side of the road, approximately ½ mile.

From Lafayette:

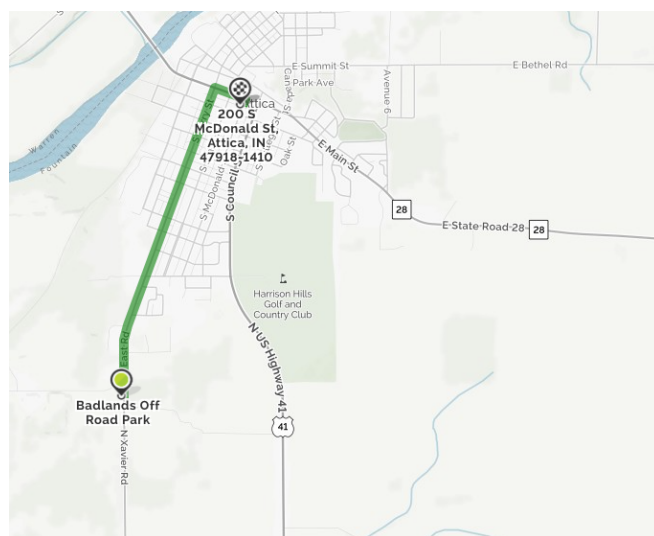
State Road 25 South to State Road 28 West. Go through the 1st stop light. At the 2nd stop light, turn left onto Perry Street. Follow Perry Street to the 4-way stop sign at the flashing light. Go through stop sign. Entrance is on the right side of the road, approximately ½ mile.

From Indianapolis, Indiana:

Interstate 74 West to Exit 15. North on US 41 to Attica. Upon entering Attica city limits, turn left onto Sycamore Street (Church on left, Golf Course on right). Follow Sycamore Street to the 4-way stop sign at the flashing light. Turn left at the 4-way stop sign. Entrance is on the right side of the road approximately ½ mile.

From Badlands Off Road Park to Attica Firehouse:

- Go north on N. Xavier Rd toward W Harrison St. (.06 miles)
- N Xavier Rd becomes East Rd (.33 miles)
- East Rd becomes S. Perry St (1.14 miles)
- Turn right onto E Jackson St/US-41/IN-28-55 (E Jackson St is just past E Washington St. David Wiese State Farm Insurance Agent is on the corner. If you reach W Mill St you have gone too far.) (.16 miles)
- Take the 2nd right onto S McDonald St. (.04 miles)
- 200 S McDonald Street



A MESSAGE FROM YOUR COORDINATOR

I am pleased that you have chosen this Jamboree to attend. We have some of the best off-road trails in the country. Some of the trails that you will be accessing are only offered through Jeep Jamboree USA.

One of the best parts of every Jamboree is sharing the camaraderie of the participants. This year we are networking with the Attica Fire Department. They have graciously agreed to allow us to use their facility for our evening meals. This will allow us more space for visiting after your days ride.

Be sure to join our Facebook Discussion Group. Check out pictures and stories from past jamborees as well as keep up with the latest information on the

upcoming one. It can take up to a week to process your request to become a participant of the Discussion Group. Please request to be added as soon as you sign up for the Jamboree. We screen all requests to be sure that it is not for advertising, or other posts that are not connected to our world of Jeeping. Again, thank you for choosing the Badlands Jeep Jamboree. We look forward to making this a great weekend for you.

SPECIAL THANKS!

Mike Siefer - Coordinator

Badlands Trail Guides

Kyle Knosp, Owner - Badlands Off Road Park

Attica Volunteer Fire Department

Ed O'Farrell – Fire Chief

VEHICLE REQUIREMENTS

Tow points are MANDATORY! Tow points may include, tow hooks properly mounted to the frame with grade six or grade eight bolts according to official Mopar installation procedures, draw bars, receiver hitches, or aftermarket bumpers with manufacturers installed clevis or d-ring anchor.

- **Participant tires not to exceed 37". If you exceed 37 inches, you will be turned away at registration, will not be allowed to attend the Jamboree or receive a refund!**
- **If you do not have tow points, you may be turned away at registration without a refund.**
- **No snowplow frames.**
- **We recommend removing running boards and steps both factory and aftermarket if planning to participate in higher rated trails.**
- **All open-topped vehicles, including older models (CJs, Scramblers and Willys), must have mandatory roll bars.**
- **Tow strap recommended (with loops—NO METAL HOOKS).**
- **Full-size spare tire or comparable size mandatory! A space-saver spare (donut) just won't do.**
- **Must be street legal with license plate.**

CB radio mandatory! Handheld CB's are not recommended. There are many safety issues regarding upcoming obstacles transmitted over the CB radio by your trail guides. It is required that each vehicle has a working CB radio. You will also learn interesting facts about the area - history, local plant and wildlife, as well as exciting stories.

Please contact Shawn Gulling at shawn@jeepjam.com or 530-333-4002 if you have further questions.

WHAT TO BRING

- ___ Basic tool kit recommended!
- ___ First aid kit recommended!
- ___ Tire gauge recommended!
- ___ Ice chest full of your favorite non-alcoholic beverages
- ___ Full tank of gas prior to General Attendance Meeting!
- ___ Lots of fluids to stay hydrated
- ___ Trail snacks
- ___ Chair or blanket for lunch stop
- ___ Flashlight
- ___ Camera
- ___ Binoculars
- ___ Insect repellent
- ___ Sun block

- ___ Medications
- ___ Toilet paper/hand sanitizer
- ___ Zip-lock bags for tissue disposal
- ___ Rain jacket and warm clothing

TRAIL USAGE AND INFORMATION

WATER CROSSINGS

Some Jamborees may have water crossings and water holes. Many of these crossings and holes offer a bypass, if you decide to "go around". It is very important to watch and listen to your trail guide. Please be sure your air intake is disconnected. Your trail guide can help you with this if needed. When driving in deep water, GO VERY SLOW! If your engine gets wet and stalls, DO NOT try to start it as you may cause serious engine damage. After the Jamboree, please be sure to reconnect your air intake. For additional tips on water crossings, please refer to your copy of "Mark A. Smith's Guide to Safe, Common Sense Off-Road Driving".

A NOTE ON LAND USAGE

Many Jeep Jamboree USA events are held on private lands with the consent of landowners, or on public lands through special use permits. In some cases, Jamboree trail groups are granted access to trail areas, which are closed to all other vehicular access during the year. Please be aware that access to these trail areas is allowed only by guided JJUSA groups during the scheduled Jeep Jamboree trail rides. Individual Jamboree guests returning later to drive in these areas on their own do so in violation of JJUSA's land use agreements and endanger future Jamboree usage of these restricted trails as well as being removed from the Jamboree without a refund. Thank you for your cooperation in assuring Jamboree access to some of America's most spectacular backcountry. Also, please note that while we trim back as much brush as possible, we are limited by federal, tribal and private landowners to the amount acceptable by each entity.

PLEASE TREAD LIGHTLY!

Travel responsibly on designated roads and trails or in permitted areas.

Respect the rights of others including private property owners and all recreational trail users, campers and others to allow them to enjoy their recreational activities undisturbed.

Educate yourself by obtaining travel maps and regulations from public agencies, planning for your trip, taking recreation skills classes, and knowing how to use and operate your equipment safely.

Avoid sensitive areas such as meadows, lakeshores, wetlands and streams, unless on designated routes.

This protects wildlife habitat and sensitive soils from damage.

Do your part by leaving the area better than you found it, properly disposing of waste, minimizing the use of fire, avoiding the spread of invasive species, restoring degraded areas, and joining a local enthusiast organization.

TRAIL RATING SYSTEM

Every Jamboree trail is rated from 1 (easiest) to 10 (the most difficult). These ratings are based on the overall trail, not just on one or two tough spots. Rain can increase ratings by one or two points. Please remember, all vehicles are subject to vehicle evaluation prior to trail departure. Numerically higher rated Jamborees are more likely to result in vehicular damage.

1-2 Obstacles and terrain are relatively easy to navigate. In optimum weather conditions, some trails may not require continual use of four-wheel drive (4WD).

3-5 Moderately demanding. Challenge for novice drivers. Obstacles may include: mud holes, boulders, and streams. Requires 4WD with 4-LO.

6-7 Demanding. Challenge for most skill levels. Mud holes get deeper, boulders get larger, and climbs get steeper. Requires 4WD with 4-LO.

8-9 Very demanding. Likelihood of getting stuck is high. Mud holes may be deep and rock climbing is more arduous. Lifts and lockers are helpful. Requires 4WD with 4-LO.

10 Extremely demanding. Reserved for the toughest off-road trip in the U.S.A. – the Rubicon Trail. Requires 4WD with 4-LO (*Not recommended for Jeep Patriot, Compass, Liberty, Cherokee, Grand Cherokee, or Commander.*)

During registration participants will have the opportunity to discuss the trails, their driving experience and vehicle capabilities with the trail guides. Guides will work with participants for trail placement.

RAIN MAY INCREASE TRAIL RATINGS 1 OR 2 POINTS, ESPECIALLY WITH STREET TIRES.

FRIENDLY REMINDERS – Before and During Your Trip

BEFORE YOU LEAVE

Waivers will be collected at the Jamboree during registration. Please read, sign, date and **bring the completed waiver with you.** All passengers in your Jeep vehicle must sign and date this waiver. A waiver for participants under the age of 18 years old must be signed and dated by a parent or the minor's legal guardian.

REGISTRATIONS, ADDING, DELETING, OR CHANGING OF PASSENGERS

In order to give accurate counts to our caterer for the meals, pay for land use and permit fees, all new registrations of vehicles, adding, deleting or changing of passengers must be completed **two weeks** prior to the Jamboree date. **We will no longer be able to accommodate any onsite registrations.** Please note that registration prices are per person, not per Jeep vehicle.

Event T-Shirts are included in your registration fee. You must pre-order event T-Shirts at the time of your registration. Shirts will be given to you during onsite registration. Other Jeep Jamboree USA clothing and merchandise will be available during the Jamboree.

GET CONNECTED

Join the Discussion Group for just one or multiple Jeep Jamborees on Facebook. This is a great way to start conversing with fellow participants and trail guides before you even get to the Jamboree. Ask questions, share information and photos before, during and after your great adventure. Click on [Discussion group](#) on the Jeep Jamboree USA homepage and join for free.

WHILE YOU ARE THERE

Name Badges and Wristbands

When you register on-site, you will be given one nametag and a wristband per participant. Each participant must wear a wristband and nametag from registration through the end of the Jamboree. Those without a wristband will not be served meals or allowed on the trails.

FREQUENTLY ASKED QUESTIONS

WHO CAN I BRING?

Whoever you want! As long as they each have a required seat belt in your Jeep 4x4. Bringing pets is strongly discouraged. If your pet must attend, you must sign and date a pet waiver during registration.

WHERE DO I SLEEP ON A JEEP JAMBOREE?

Participants are responsible for arranging their own lodging. Included in this trip itinerary is a list of accommodations. Be sure to mention you're attending a Jeep Jamboree when making your reservation.

WHAT DOES THE JAMBOREE FEE COVER?

Your fee covers all necessary permits, land-use fees, experienced guides for the entire trip, an event T-shirt and three meals on both Friday and Saturday ("Select" adventurers include evening meals only). NOTE: Meals vary. Regretfully, no accommodations can be made for special diets or dietary restrictions. Also included is an official Jeep Jamboree dash plaque and access to some of the finest trails in America – several of which are only available through this program. Each Jamboree also features a giveaway for chances to win great prizes from our sponsors. Sorry, no partial trips

are offered or meal only options and no spectators allowed. All participants must be officially registered.

CAN I BRING MY JEEP LIBERTY, CHEROKEE, GRAND CHEROKEE, RENEGADE OR COMMANDER?

Of course! All new Jeep 4x4 vehicles with a 4-LO transfer case are Trail Rated® and are tested on demanding 4x4 trails. Your Jeep four-wheel-drive vehicle is required to be in good condition, with good tires, brakes, and seat belts. In addition, we require prior approval for larger Jeep 4x4s, such as Grand Wagoneers and J-Series Pickups. Jeep Jamboree USA reserves the right to refuse participation to any applicant whose vehicle exceeds size restrictions.

COULD MY VEHICLE BE DAMAGED ON A JAMBOREE?

Every effort is made by Jeep Jamboree USA to make the trails as safe as possible. Participants are advised to closely follow instructions given by trail guides, spotters, and Jeep Jamboree USA. However, there's the possibility of damage to your vehicle when traveling rough terrain. Any damage is the owner's responsibility. Jamborees with higher difficulty ratings are more likely to encounter terrain that may contribute to vehicular damage. Participants are required to sign, date and turn in a waiver at on-site registration.

JEEP JAMBOREE USA POLICIES

SAFETY

Our trail guides are trained to put your safety first. If they ask you to refrain from any activity, to avoid specific trails or areas, which jeopardize you or your fellow participant's safety or is not authorized for our use, please follow their directions. JJUSA does not authorize or promote any night runs. AS AGREED TO IN YOUR WAIVER, ALL PARTICIPANTS AGREE TO WEAR HIS OR HER RESPECTIVE SEAT AND SHOULDER BELTS. IF A TRAIL GUIDE ASKS YOU TO WEAR YOUR SEAT BELT AND YOU DO NOT COMPLY, VIOLATORS WILL BE REMOVED FROM THE JEEP JAMBOREE, MONEY WILL NOT BE REFUNDED, AND THOSE INVOLVED WILL BE BANNED FROM ALL FUTURE JEEP JAMBOREES.

ALCOHOLIC BEVERAGES

No occupants of vehicle will possess or consume alcohol while on the trails. Doing so means immediate expulsion. Money will not be refunded, and those involved will be banned from all future Jeep Jamborees.

REFUND POLICIES

We realize that unexpected events such as work conflicts, mechanical problems and illnesses may cause you to cancel your trip. However, we have many business partners that we pay deposits based on a preliminary participant count, therefore in order to

limit the impact of cancellations the following penalties apply to your refund should you choose to cancel:

<u>Days Prior to Trip Date</u>	<u>Penalty</u>
Reservation to 60 days	\$125 Classic \$75 Select
59 days to 30 days	50%
29 days to 15 days	75%
14 days to trip date	NO REFUND
Transfer fee to trip date	\$100

Transfers from one trip to another must be done within the same calendar year.

CHILDREN 5 & UNDER

Children 5 and under are not charged to participate with you in a Jamboree. Complimentary meals for children 5 and under will be provided.

ONSITE PURCHASES AT JAMBOREE

If you purchase JJUSA merchandise at the event, please be aware that we can accept payment by cash only; sorry no credit cards or checks!

NO C.O.D.

Please note that all registrations must be paid at least two weeks in advance. We will no longer be able to accommodate registrations of vehicles, adding, deleting or changing of passengers at on-site registration.

NO PARTIAL DAYS OR MEALS ONLY REGISTRATIONS

Registrations are for the SAME person (driver or passengers) for BOTH days. Passengers may not be swapped; i.e. one person on one day; another person another day. We base our nametags, meals and waivers on the same person for both days. We do not permit partial (one-day only) registrations (no refunds are given for days not used), nor do we sell a "meals only" option for those who are not on the trail, but wish to join participants for meals.

Due to unforeseen circumstances all trips, events and trails are subject to change or cancellation without advance notice.

