



10TH GREENBRIER VALLEY

LOCATION

White Sulphur Springs, West Virginia
37.7775968,-80.4638073

DATE

October 17 – 19, 2024

DIFFICULTY

Trail Rating 3 – 7

STYLE

A Select Jeep Jamboree. Your dinners are included on Friday and Saturday. You are responsible for breakfast and lunch each day.

KEY EVENTS

REGISTRATION

Thursday @ 5:00 – 7:00 p.m.

MANDATORY PRE-RIDE MEETING

Friday @ 8:30 a.m.

DINNER

Friday @ 5:30 – 7:30 p.m.

MANDATORY PRE-RIDE MEETING

Saturday @ 8:30 a.m.

DINNER & PRIZES

Saturday @ 5:30 – 7:30 p.m.

POLICIES & REMINDERS FOR ALL 2024 JEEP JAMBOREES

EVENT WAIVER

You are required to complete a [Release of Liability Waiver](#) for all occupants of your Jeep and bring it with you to on-site registration. All passengers in your Jeep must sign a [Release of Liability Waiver](#). A parent or the minor's legal guardian must sign and date a waiver for passengers under 18 years old. If you forget your signed [Release of Liability Waiver](#), all occupants of your vehicle must be present at registration to sign a new waiver before you can receive your event credentials.

NEW ON-SITE REGISTRATIONS & CHANGES ARE NOT ACCEPTED

All new registrations of vehicles as well as adding, deleting, or changing passengers must be completed (14) fourteen days prior to the Jamboree date. Please refer to the refund and transfer policy on the last page of this itinerary or www.JeepJamboreeUSA.com

MAXIMUM TIRE SIZE

Participant Jeep tire size is not to exceed 40". If you exceed the tire limitations you will be turned away at registration and will not be allowed to attend the Jamboree or receive a refund.

VEHICLE MODIFICATIONS

- Seat belts are required in all vehicles for all occupants.
- Maximum suspension lift allowed is 6".
- Your Jeep must be street legal, registered and insured.
- Buggy-style Jeeps are not allowed.

If you have questions regarding the acceptability of your vehicle, please contact your Adventure Consultant. If you do not meet the above conditions, you will be turned away at registration, will not be allowed to attend, or receive a refund. Admission of highly modified Jeeps without prior approval is subject to the discretion of the Jeep Jamboree Event Staff.

GMRS RADIOS ARE REQUIRED

A working GMRS radio is mandatory for all Jeep Jamboree events. Please see the last page of this itinerary or visit <https://link.jeepjam.com/radios> for more information.

DRONE POLICY - NEW FOR 2024!

Many of the land owners, federal and local agencies, etc. prohibit the use of drones. Most drones require you to have a Part 107 license if you are flying over people or publish videos. Many times our stops are for bathroom breaks which are inappropriate times for drone flights. If you may legally fly your drone, permission is still required from the guides on your trail and you must not cause any delays or disruptions as determined by the guides or staff. You are responsible for any damage, fines, penalties, and/or legal action incurred in the operation of your drone.

FOLLOW THE FLOW

When you arrive at a Jeep Jamboree, you must complete these steps in this order:

Vehicle Evaluation → Registration → Trail Sign-Up

You will not be permitted to sign-up for trails until you have completed Vehicle Evaluation and Registration.

PHOTO ID REQUIRED AT REGISTRATION - NEW FOR 2024!

The driver of record is required to show a photo ID when presenting your waiver and picking up your registration packet.

NAME BADGE - UPDATED FOR 2024!

Each person must wear their name badge throughout the entire Jamboree. A name badge is required for meals and must be presented whenever requested by a guide or staff member.

TRAIL STICKERS

Trail stickers provided at trail sign-ups must be displayed on your windshield prior to departing for any off-road trail ride.

TRAIL CONDITIONS

Trail conditions can vary widely between trails and even on the same trail on different days. Factors such as weather, other Jeepers, and the line you choose all have an effect on the trail and how your Jeep will traverse it. Rainfall, even from days prior, may increase trail ratings 1 or 2 points. When in doubt, ask a Jeep Jamboree Trail Guide for guidance. Please note that Federal, Tribal and Private landowners may limit the amount of brush we are able to trim back on a trail.

WEATHER CONDITIONS

Weather conditions can be dynamic at a Jeep Jamboree. We recommend you look at a 10-day forecast of weather conditions. Be sure to check the weather for all areas listed in the itinerary as different locations may have very different temperatures.

KNOW BEFORE YOU GO

The Jeep Jamboree USA Off-Road Driving Tips booklet is the ultimate guide to safe, common sense off-road driving. View the guide at <https://link.jeepjam.com/drivingtips>

GET THE GEAR YOU NEED FOR YOUR ADVENTURE!

GMRS Radios, Tow Straps, Soft Shackles, Shirts, Hats, and more at www.JeepJamboreeUSA.com

To add or change passengers or cancel your trip, visit <https://jeepjamboreeusa.com/my-account/>

For trip or Jeep questions, contact Shawn Gulling at shawn@jeepjam.com

For registration questions, email us at registration@jeepjam.com

10TH GREENBRIER VALLEY ITINERARY

IMPORTANT INFORMATION

Please follow the flow when you arrive on Thursday: Vehicle Evaluation → Registration → Trail Selection/Sign-up

- No late registration on Friday morning.
- Vehicle Evaluation & Registration are mandatory prior to trail sign-ups.
- Bring your completed waiver to registration. Waiver is available at <https://link.jeepjam.com/waiver>.
- Trail sign-up will take place after you register, on a first come, first served basis. Space is limited on each trail.
- Your guides will help you select trails based on your Jeep and your comfort level.
- Make sure you have a full tank of gas prior to the General Attendance Meeting on Friday.

THURSDAY, OCTOBER 17, 2024

5:00 – 7:00 p.m. Vehicle Evaluation, drive-through registration, and trail sign-ups will take place at State Fair of West Virginia (SFWV) Event Center. Enter Gate 5 and follow the signs. Refer to *Key Locations & Links* on the next page for address and map link.

FRIDAY, OCTOBER 18, 2024

7:30 – 8:15 a.m. Trail Staging will be at SFWV “Midway Area”. Coffee, tea and hot chocolate will be available. Make sure to pack a lunch or pick up your pre-purchased lunch at the staging area (purchased Thursday during registration).

8:30 a.m. **Mandatory** General Attendance meeting in the SFWV West Virginia Building.

9:00 a.m. – 5:00 p.m. Trail ride with lunch along the trail around noon. Lunch time varies based on trail progress.

5:30 – 7:30 p.m. Dinner at SFWV West Virginia Building. Make sure you have a full tank of gas for tomorrow.

SATURDAY, OCTOBER 19, 2024

7:30 – 8:15 a.m. Trail Staging will be at SFWV “Midway Area”. Coffee, tea and hot chocolate will be available. Make sure to pack a lunch or pick up your pre-purchased lunch at the staging area (purchased Thursday during registration).

8:30 a.m. **Mandatory** General Attendance meeting in the SFWV West Virginia Building.

9:00 a.m. – 5:00 p.m. Trail ride with lunch along the trail around noon. Lunch time varies based on trail progress.

5:30 – 7:30 p.m. Dinner at SFWV West Virginia Building. Awards and prize drawings following dinner.

To add or change passengers or cancel your trip, visit <https://jeepjamboreeusa.com/my-account/>

For trip or Jeep questions, contact Shawn Gulling at shawn@jeepjam.com

For registration questions, email us at registration@jeepjam.com

KEY LOCATIONS & LINKS

STATE FAIR OF WEST VIRGINIA GATE 5

Use Gate 5 when arriving on Thursday for vehicle evaluations.
Map Link: <https://link.jeepjam.com/wvgate5>

STATE FAIR OF WEST VIRGINIA EVENT CENTER - SFWV

947 Maplewood Ave
Lewisburg, WV 24901
Map Link: <https://link.jeepjam.com/wvfairgrounds>

SPECIAL THANKS

John & GERALYN Catanese – Coordinators
Greenbrier Valley Jeep Jamboree Trail Team
State Fair of West Virginia Event Center
Greenbrier County Convention and Visitors Bureau
Private Land Owners

TRAILER PARKING

PARKING AT STATE FAIR OF WEST VIRGINIA

Trailer parking is available at the Fairgrounds beginning on Wednesday. You may park in the Infield area of the horse track. This area is located between the Heritage Barn and the West Virginia building (see the map on the next page).

Use Gate 5 to access the trailer parking. All trailers must be removed by Sunday at noon.

Map Link: <https://link.jeepjam.com/wvgate5>

A MESSAGE FROM YOUR GREENBRIER VALLEY COORDINATOR...

We are so pleased that you have decided to join us for the Greenbrier Valley Jeep Jamboree located in the beautiful Greenbrier Valley of West Virginia. We hope you enjoy our event as well as some of the many historic, cultural and recreational opportunities that this beautiful area of West Virginia has to offer.

Take a look at why Greenbrier Valley is the ultimate getaway destination. From shopping and dining, to outdoor recreational activities, and world-class accommodations, a visit to the area is a must! There's something for everyone.

LODGING INFORMATION

HOTELS / MOTELS

Fairfield Inn (304) 645-7999
273 Coleman Drive, Lewisburg, WV 24901
www.marriott.com

Hampton Inn Lewisburg (304) 645-7300
30 Coleman Drive, Lewisburg, WV 24901
www.hilton.com

Quality Inn (304) 645-7722
540 North Jefferson Street, Lewisburg, WV 24901
www.qualityinn.com

Holiday Inn Express Hotel & Suites (304) 645-5750
222 Hunters Lane, Lewisburg, WV 24901
www.ihg.com

Super 8 Motel (304) 647-3188
550 North Jefferson Street, Lewisburg, WV 24901
www.super8.com

The Greenbrier (304) 536-1110
300 W. Main Street, White Sulphur Springs, WV 24901
www.greenbrier.com

CAMPING & RV PARKING

Camping and RV parking is available at the State Fair of West Virginia. For details on making a reservation please call the State Fair Event Center at 304.645.1090, Monday through Friday from 8:00 a.m. – 4:00 p.m.

NUMEROUS BED AND BREAKFASTS

Visit www.greenbrierwv.com for more information

To add or change passengers or cancel your trip, visit <https://jeepjamboreeusa.com/my-account/>

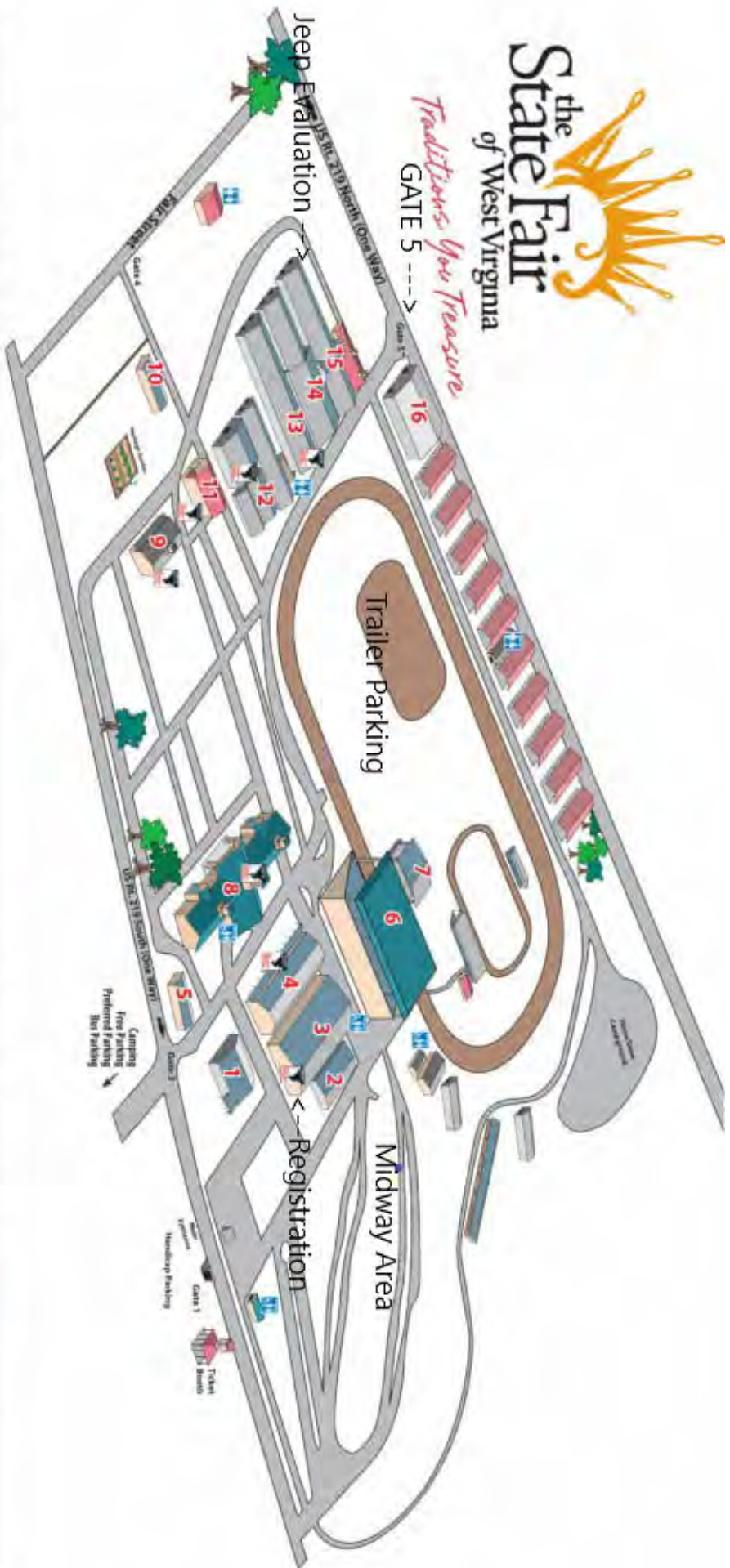
For trip or Jeep questions, contact Shawn Gulling at shawn@jeepjam.com

For registration questions, email us at registration@jeepjam.com

the State Fair of West Virginia

Traditions You Treasure

GATE 5 --->



- BUILDING KEY**
- 1 Administration Building
 - 2 Cafeteria
 - 3 West Virginia Building
 - 4 Gus R. Douglass Annex Building
 - 5 Maintenance Shop
 - 6 Grandstand
 - 7 Stage
 - 8 Cecil H. Underwood Youth Center
 - 9 WVU Building
 - 10 Farm to Food Pavilion
 - 11 Blue Ribbon Center
 - 12 Tractor Supply Sm. Stock Arena
 - 13 Ag. Pavilion
 - 14 Southern States Lg. Stock Arena
 - 15 Heritage Barn
 - 16 Draft Horses
- Restrooms Accessible to the Disabled**
- ALL OF THE ABOVE BUILDINGS MAY BE USED AS A SAFE SHELTER IN THE EVENT OF SEVERE WEATHER (during regular business hours).**

TRAIL DESCRIPTIONS

All trail ratings will vary as they are based on weather, vehicle set-up and driver experience. Add one rating level for wet weather.

The Farm • Level 3–4 • Grey

On the way to “The Farm” we travel through the Greenbrier State Forest and up to the top of the mountain. There are technical driving sections, rock crawling and hill climbs, including a long power line climb. The view from the top of the power line at the Cabin is amazing.

At the “Razor Back Ridge” rock crawling will challenge your abilities and “The Cave” trail will have you looking for the expert guide spotters. Later in the day we will be in the “Turkey Trott” where the passengers are encouraged to take the drivers seat for an easier drive. At the end of the day, we will be in an elevated open field with awesome colorful views of the countryside. Come join us for a fun filled day at “The Farm”.

Maybe Some Day • Level 3–4 • White

Maybe Someday is a great family friendly trail with some beautiful views of Kate’s mountain. This trail will be enjoyed by both experienced and novice Jeepers. If you are looking to see your flexing capabilities, attempt off-camber obstacles or just enjoy a stroll on the rocky path to breathtaking views of the mountains, this is the trail for you!

Yellow Jacket • Level 4 • Black/Yellow

Come test your driving skills with us on the tight, twisty Yellow Jacket Trail. We begin with a series of sharp hill climbs and steep descents. Shortly afterward we get into the meat of our trail, narrow, winding, dry (mostly!) creekbeds. See what your Jeep is made of on Trek and Headache. Can you swing all the way down the Grapevine, a muddy, slippery ravine? If that’s not enough for you, we dive into the Yellow Jacket’s nest, a double loop in tight, washed out creek bottoms.

This is a really neat, moderate trail that requires a minimum of 32” tires and a locker makes it easier. This is very tight for longer wheel based vehicles.

Monkey Business • Level 5 • Orange

A trail that is more fun than a barrel of monkeys. From rocky hills to cambered valley crawls, this trail has a little of everything to challenge and excite you. From powering out of River Loop to winding around Knuckle Buster, the Monkey Business trail has something for everyone.

Notice: Participating Monkey Business can cause smiling, laughter, and general tom foolery. These side effects are perfectly normal, just like the guides on Monkey Business.

Minimum 33” mud terrain tires required. At least one locker is recommended.

Klimbs & Kricks • Level 5 • Blue

Come join us as we climb long steep ascents with amazing views. We head back down steep descents headed for some deep water crossings (with bypasses), then on to Babbling Brook, Confunction Junction and Wagon Wheel. More mud holes and climbs are ahead of us before we enter some cool creek beds and up to Plane Crash. Hold on as we approach Kamikaze Hill. Both driver and their Jeep will be challenged on this 5 rated Trail.

33” or larger tires are suggested for maximum enjoyment!

Hoot N Holler • Level 6 • Yellow

Be ready to Hoot N Holler as the group encourages each other along this challenging trail. After we pass through the tunnel in White Holler, the trail works its way up a rocky creek bed and some will opt to take on Yo-Yo along the way. There is a break from the rocks for a while as we ascend to the top of Kate’s Mountain via Camel Back and Unsupervised. The trail has an easy stretch working across the ridge of the mountain before dropping into Butcher Holler. We’ll drop into Boomerang Gulch then on to the Drain and the great Waterfall Run. We’ll exit the trail through Butcher Holler and onto the banks of Lake Tuckahoe where bald eagles have been spotted. This trail features a lot of rocks, some hills, but very little mud.

***Required Equipment:** Aggressive 33” tires for short wheelbases and 35” tires for long wheelbases, 1 locker, and a working winch are required. Skid plates are highly recommended. Some of the more difficult sections of the trail do not have bypasses.*

Bunny Trail • Level 7–8 • Red

You won’t find any brier patches on this challenging trail. The ride starts out on a nice winding gravel road through the beautiful mountainside up to Monkey Barrel Holler. The first challenge is a rocky creek trail that changes each year with the help of mother nature. This trail has many large rocks that will test your jeep and your off road driving ability. Once out of the creek we will head up to the Bunny trail and drop in and out of a steep ravine which is a loose rocky climb with several opportunities to get off camber when a tire drops into a rocky hole. Returning jeepers will notice mother nature has made many changes to the Bunny trail making some areas challenging and exciting while other areas are no longer passable requiring to be bypassed.

***Required Equipment:** Working winch, 35” or larger tires, and at least one locking differential.*

***Recommended** are two locking differentials. Expect to use your skid plates as you will hear and feel the rocks scrape your undercarriage.*

To add or change passengers or cancel your trip, visit <https://jeepjamboreeusa.com/my-account/>

For trip or Jeep questions, contact Shawn Gulling at shawn@jeepjam.com

For registration questions, email us at registration@jeepjam.com

TRAIL RATING SYSTEM

Every Jamboree trail is rated from 1 (easiest) to 10 (the most difficult). These ratings are based on the overall trail, not just on one or two tough spots. Rain can increase ratings by one or two points. Please remember, all vehicles are subject to vehicle check prior to trail departure. Numerically higher rated Jamborees are more likely to result in vehicular damage.

1-2 Obstacles and terrain are relatively easy to navigate. In optimum weather conditions, some trails may not require continual use of four-wheel drive (4WD).

3-5 Moderately demanding. Challenge for novice drivers. Obstacles may include: mud holes, boulders, and streams. Requires 4WD with 4-LO.

6-7 Demanding. Challenge for most skill levels. Mud holes get deeper, boulders get larger, and climbs get steeper. Requires 4WD with 4-LO.

8-9 Very demanding. Likelihood of getting stuck is high. Mud holes may be deep and rock climbing is more arduous. Lifts and lockers are helpful. Requires 4WD with 4-LO.

10 Extremely demanding. Reserved for the toughest off-road trip in the U.S.A. – the Rubicon Trail.

Requires 4WD with 4-LO, front and rear lockers, skid plates, rock rails and an aftermarket rear differential cover.

Rubicon Trail Jeep Jamboree is limited to TJ, JK, JL and JT models only without prior approval. Jeep Renegade, Patriot, Compass, Liberty, Cherokee, Grand Cherokee, Commanders, and Wagoneers are not allowed.

During registration you will have the opportunity to discuss the trails, your driving experience, and Jeep capabilities with the trail guides. The guides will work with you to select appropriate trails. Rain may increase trail ratings 1 or 2 points, especially with street tires.

PLEASE TREAD LIGHTLY!

Travel responsibly on designated roads and trails or in permitted areas.

Respect the rights of others including private property owners and all recreational trail users, campers and others to allow them to enjoy their recreational activities undisturbed.

Educate yourself by obtaining travel maps and regulations from public agencies, planning for your trip, taking recreation skills classes, and knowing how to use and operate your equipment safely.

Avoid sensitive areas such as meadows, lakeshores, wetlands and streams, unless on designated routes. This protects wildlife habitat and sensitive soils from damage.

Do your part by leaving the area better than you found it, properly disposing of waste, minimizing the use of fire, avoiding the spread of invasive species, restoring degraded areas, and joining a local enthusiast organization.

A NOTE ON LAND USAGE

Many Jeep Jamboree USA events are held on private lands with the consent of landowners, or on public lands through special use permits. In some cases, Jamboree trail groups are granted access to trail areas which are closed to all other vehicular access during the year.

Please be aware that access to these trail areas is allowed only by guided Jeep Jamboree USA groups during the scheduled Jeep Jamboree trail rides. Individual Jamboree guests returning later to drive in these areas on their own do so in violation of Jeep Jamboree USA's land use agreements and endanger future Jamboree usage of these restricted trails as well as being removed from the Jamboree without a refund.

Thank you for your cooperation in assuring Jamboree access to some of America's most spectacular backcountry.

To add or change passengers or cancel your trip, visit <https://jeepjamboreeusa.com/my-account/>

For trip or Jeep questions, contact Shawn Gulling at shawn@jeepjam.com

For registration questions, email us at registration@jeepjam.com

WHAT ARE THE REQUIREMENTS FOR MY JEEP?

- **Tow points are *MANDATORY!*** Tow points may include:
 - Tow hooks properly mounted to the frame with grade six or grade eight bolts according to official Mopar installation procedures.
 - Draw bars and receiver hitches
 - Aftermarket bumpers with manufacturer installed clevis or D-ring anchor.

If you do not have tow points, you may be turned away at registration without a refund.

- **A GMRS radio is *REQUIRED!*** There are many safety issues regarding upcoming obstacles transmitted over the radio by your trail guides. You will also learn interesting facts about the area - history, local plant and wildlife, as well as exciting stories.
- Your Jeep must be street legal including a license plate and proof of insurance.

- Participant Jeep tire size shall not exceed 40". If your tires exceed 40 inches, you will be turned away at registration, will not be allowed to attend the Jamboree, or receive a refund!
- Seat belts are required in all vehicles for all occupants.
- Snowplow frames are not allowed.
- We recommend removing running boards and steps (both factory and aftermarket) if you are planning to participate in higher rated trails.
- All open-topped vehicles, including older models (CJs, Scramblers and Willy's), are required to have roll bars.
- A tow strap with looped ends is recommended. **Straps with metal hooks are not allowed.**
- A full-size spare tire is mandatory!

FREQUENTLY ASKED QUESTIONS

ARE JEEP JAMBOREES SAFE?

Our trail guides are trained to put your safety first. If they ask you to refrain from any activity or to avoid specific trails or areas, you must follow their directions. Jeep Jamboree USA does not authorize or promote any night runs. You must wear your seat and shoulder belts. If a Trail Guide asks you to wear your seat belt and you do not comply, you will be removed from the Jeep Jamboree without a refund and banned from Jeep Jamborees.

WILL MY JEEP BE GOING THROUGH WATER?

Some Jamborees may have water crossings and mud holes. Many of these crossings and holes offer a bypass. It is very important to watch and listen to your trail guide. When driving in deep water, **go very slowly!** If your engine gets wet and stalls, **do not** try to start it as you may cause serious engine damage. For additional tips on water crossings and many other off-road situations, please refer to your copy of *Jeep Jamboree USA Off-Road Driving Tips*, available at <https://link.jeeppjam.com/drivingtips>

YOU MUST WEAR YOUR NAME BADGE

When you register on-site, you will be given one name badge per participant. Please wear your name badge while at the event as it is verification of your registration, your admission to the trails and meals, and helps everyone get to know each other.

GET CONNECTED WITH OUR FACEBOOK GROUPS

Join one or more of the Jeep Jamboree discussion groups on Facebook. Ask questions, share information and photos before, during and after your great adventure.

WHAT SHOULD I BRING?

- A basic tool kit, first aid kit, tire gauge, rain jacket, and clothing for all weather conditions are highly recommended.
- An ice chest full of your favorite non-alcoholic beverages. It is important to stay hydrated!
- A full tank of gas prior to General Attendance Meeting as you will not have time to fuel up after the meeting.
- Trail snacks and a chair/blanket for the lunch stop.
- Insect repellent, Sun Block, Medications, Hand Sanitizer, Flashlight, Camera, Binoculars
- Toilet paper and Zip-lock bags for tissue disposal

MAY I BRING MY PET?

Bringing pets is strongly discouraged. If your pet must attend, you must submit a pet waiver during registration.

WHAT IS THE POLICY ON ALCOHOL, DRUGS, ETC.?

No occupants of the vehicle will possess or consume alcohol, non-prescription drugs, or be under the influence of any substance while on the trails. Doing so means immediate expulsion without a refund and those involved will be banned from all future Jeep Jamborees.

COULD MY VEHICLE BE DAMAGED ON A JAMBOREE?

Every effort is made by Jeep Jamboree USA to make the trails as safe as possible. You are advised to closely follow instructions given by Jeep Jamboree Trail Guides. Jamborees with higher difficulty ratings are more likely to encounter rough and challenging terrain that may contribute to vehicular damage. Any damage is the owner's responsibility.

To add or change passengers or cancel your trip, visit <https://jeeppjamboreeusa.com/my-account/>

For trip or Jeep questions, contact Shawn Gulling at shawn@jeeppjam.com

For registration questions, email us at registration@jeeppjam.com

GMRS RADIO, CHANNEL, AND FREQUENCY INFO

IF YOU DON'T HAVE A GMRS RADIO YET

- Your easiest and best option is to purchase one of the recommended Midland radios. These quality radios are easy to use and are available at <https://link.jeepjam.com/radios> and in limited supply at a Jeep Jamboree

RADIO DIFFERENCES AND FREQUENCIES

- In late 2017, the FCC set standards for FRS/GMRS channel numbers and frequencies. Any FCC approved radio manufactured after October of 2017 should match the channels in the chart and work for your Jeep Jamboree.

FREQUENCIES AND POWER

- FRS and GMRS use the same channels/frequencies. FRS (Family Radio Service) runs at lower power. GMRS (General Mobile Radio Service) runs at higher power.

LICENSING

- Before operating a GMRS radio, you must have a valid license. Any radio using the shared FRS/GMRS frequencies that is able to transmit above 2 Watts of power is considered a GMRS radio and requires a license.

WHY GMRS OVER FRS OR CB?

- With FRS handhelds you may hear others on the trail, but they may not hear you. GMRS has more power, meaning you can transmit farther. GMRS offers more reliability, usability, and quality over a CB radio.

Frequency	FRS/GMRS Channel	FRS Power	FRS Bandwidth	GMRS Power	GMRS Bandwidth
462.5625 MHz	1	2 W	12.5 kHz	5 W	20 kHz
462.5875 MHz	2	2 W	12.5 kHz	5 W	20 kHz
462.6125 MHz	3	2 W	12.5 kHz	5 W	20 kHz
462.6375 MHz	4	2 W	12.5 kHz	5 W	20 kHz
462.6625 MHz	5	2 W	12.5 kHz	5 W	20 kHz
462.6875 MHz	6	2 W	12.5 kHz	5 W	20 kHz
462.7125 MHz	7	2 W	12.5 kHz	5 W	20 kHz
Channels 8-14 are low power (.5 watt) channels and are not used by Jeep Jamboree					
462.5500 MHz	15	2 W	12.5 kHz	50 W	20 kHz
462.5750 MHz	16	2 W	12.5 kHz	50 W	20 kHz
462.6000 MHz	17	2 W	12.5 kHz	50 W	20 kHz
462.6250 MHz	18	2 W	12.5 kHz	50 W	20 kHz
462.6500 MHz	19	2 W	12.5 kHz	50 W	20 kHz
462.6750 MHz	20	2 W	12.5 kHz	50 W	20 kHz
462.7000 MHz	21	2 W	12.5 kHz	50 W	20 kHz
462.7250 MHz	22	2 W	12.5 kHz	50 W	20 kHz

REFUNDS, TRANSFERS, AND CANCELLATIONS

OUR TRANSFER POLICY

A transfer allows the **original purchaser** to transfer their registration from one trip to another, dependent on availability, at no charge.

- Transfers must take place in the same calendar year and at least 14 days prior to the event.
- Transfer or sale of your registration to another person is prohibited and will result in a cancellation without a refund.**
- If you are unable to attend, you should cancel your registration. Your spot will be released to those on the waiting list.

OUR REFUND POLICY

We understand things come up. As we approach our events, we incur expenses we cannot recover. As such, the following refund policy applies to all Jeep Jamborees:

- 30 days or more before your Jeep Jamboree**
 - \$125 cancellation fee for Classic Jamborees
 - \$100 cancellation fee for Select Jamborees
 - \$350 cancellation fee for domestic Signature, Adventure, and Expedition Jamborees
- 29 days to 15 days** – 50% of your total will be refunded
- 14 days to trip date** – No refund

HOW DO I CANCEL MY REGISTRATION?

Canceling your registration is quick and easy via your online account at <https://jeepjamboreeusa.com/my-account/> Sign-in with the email address you used to register and then cancel the trip you are unable to attend. You may also email the registration team at registration@jeepjam.com. This method is typically slower than the online method.

HOW DO I ADD OR CHANGE PASSENGERS?

Adding or changing passengers is easy via your online account at <https://jeepjamboreeusa.com/my-account/> Sign-in with the email address you used to register and make the changes you desire. You may also email the registration team at registration@jeepjam.com. This method is slower than the online method. All changes must be made 14 days prior to your trip.

WHAT IF A SPECIFIC JEEP JAMBOREE IS CANCELED?

Though rare, from time to time, a Jeep Jamboree may have to be canceled. For **most** of our events, you will be given the option to receive a full refund or transfer to another event that has openings. For **some** Jeep Jamborees, we may deduct up to a 15% fee from your refund to offset unrecoverable expenses.

DUE TO UNFORESEEN CIRCUMSTANCES ALL TRIPS, EVENTS, AND TRAILS ARE SUBJECT TO CHANGE OR CANCELLATION WITHOUT ADVANCE NOTICE.